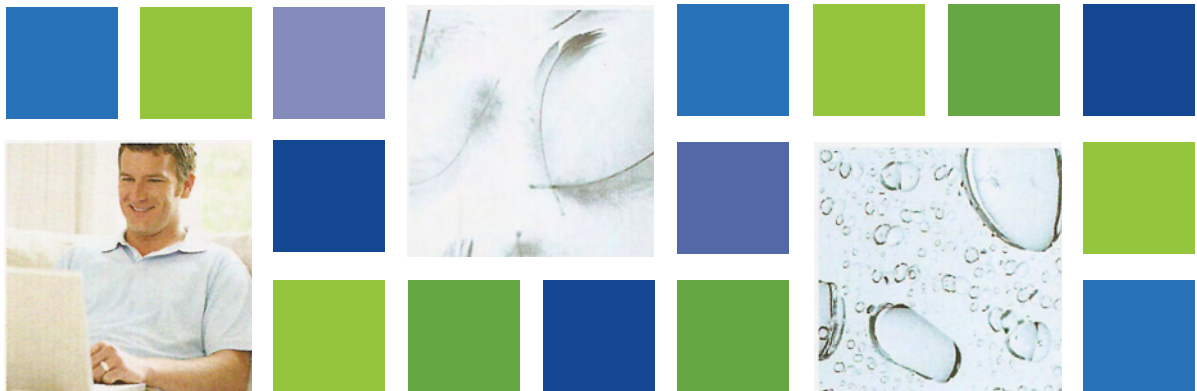


Holiday Inn Express® Nampa





DEAR GUEST

Welcome to the NAMPA HOLIDAY INN EXPRESS & SUITES. We are delighted you have chosen our property for your stay. Whether your trip is for business, pleasure or both, the staff and I are committed to meeting and exceeding every expectation you may have. We take hospitality and service very seriously at our hotel, so that your stay will be enjoyable and memorable .

As human beings, we sometimes make mistakes. Our ability to correct those mistakes really starts with you, our guest. If the accommodations, service or product fall short of your expectations, please do not hesitate to call it to the attention of any member of our staff.

Every morning we provide a complimentary Breakfast Bar which is available from 6:30 A.M to 10:00 A.M in our Breakfast Lounge.

For your leisure, our indoor swimming pool is open from 6 A.M. to 11 P.M and our exercise room is open 24 Hours, business center 24 hours.

It is our objective that you have a 100% perfect stay! Our Hospitality Promise ensures your satisfaction.

We thank you for your business and hope you will continue to make Holiday Inn Express & Suites of Nampa your home away from home.

Sincerely,

Your General Manager & Staff

Holiday Inn Express & Suites
4104 E Flamingo Avenue
Nampa, ID 83687

HOSPITALITY PROMISE

Making your stay a complete success is our goal. Just let our Manager on Duty or Front Desk Staff know if any part of your stay isn't satisfactory. We promise to make it right or you won't pay for that part of your stay.



OUR SERVICES & FACILITIES

Amenities

The Hotel can provide baby cribs and sofa sleepers with advanced notice. We also have a supply of often forgotten travel necessities, such as shampoo, combs, toothbrushes, and disposable razors.

Check In / Check Out

Check In time is 3:00 p.m. Check Out time is 11 :00 a.m.

Check Cashing

Due to the limited amount of cash kept on the property, the hotel is unable to provide check cashing services. Please contact the front desk for directions to the nearest bank.

Continental Breakfast

We offer a complimentary continental breakfast from 6:30 a.m to 10:00 a.m daily in the breakfast lounge.

Credit Cards

We gladly accept Visa, MasterCard, American Express, Discover, Carte Blanche and Diners Club.

Emergency

In the event of an emergency, medical or otherwise, please contact the front desk (dial "0") for immediate attention.

Fax Machine

Fax services are available for your convenience. The hotel fax number is (208) 466-4490.

Ice & Vending Machine

Ice and vending machines are located next to the elevator on each guest floor.

Key Card

Should you lose your key card, please notify the front desk immediately so that your lock may be re-coded. Please return your key card to the front desk upon check-out.

Mail & Messages

Mail drop at front desk. Each Suite offers voice mail messaging.

Newspapers

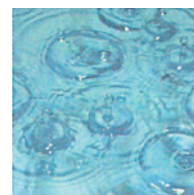
Newspapers are available in the lobby.

Transportation

We would be happy to arrange for a taxi or make recommendations concerning your transportation needs.

Wake-up Service

If you would like a wake-up call, please notify the hotel operator or use in room phone system.





TELEPHONE INFORMATION

Local Calls **Dial 9 + Number (No charge)**

To Call Another Guest **Dial Room Number or "0"**

Directory Assistance

There will be a service charge 9 + 1 + Area Code + 555 1212

Toll Free Numbers **9 + 1 + (800 or 888) + 555-1212**

Telephone Directory

Dial 0

Hotel Manager • Front Desk • Emergency
House Keeping • Laundry/Valet • Wake-Up Calls
Reservations • Messages/Mail

For your convenience, a Meridian telephone directory is located in the desk.

Bill To Room

In-State - Direct Dial 8 + 1 + Area Code + Number
Out-of-State 8 + 1 + Area Code + Number
International 8 + 011 + Country Code + City Code + Number

Long Distance: Direct Dialed calls 20 cents per minute with a \$1.00 access charge.

International Calls: Direct Dialed calls \$1.50 per minute with a \$1.00 access charge

Bill To Credit Card

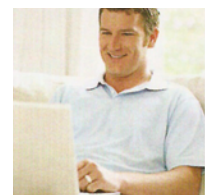
In-State - Direct Dial 8 + 0 + Area Code + Number
Out-of-State 8 + 0 + Area Code + Number
International 8 + 011 + Country Code + City Code + Number

Operator Assisted Calls

Local Operator Dial 9 + 0
Long Distance Operator Dial 9 + 00
International Operator Dial 9 + +
Person-to-Person, Collect
& Out-of-State Dial 9 + 0 + Area Code + Number (Operator will assist)

Travelers with Disabilities

This hotel, like all hotels in the InterContinental Hotels Group system, is committed to providing accessible facilities for travelers with disabilities. If you encounter barriers during your stay, please contact the Manager on Duty at extension "0". If you have further comments regarding your stay, let us know by calling Guest Relations at 1.800.621.0555 (within the U.S. and Canada). The Hospitality PromisesSM Program and the Holiday Inn Reservations PromisesSM apply to all our guests. If in the future you require an accessible guest room, you can assist us in meeting your needs by making advance reservations through 1.800.HOLIDAY (1.800.465.4329). Request an accessible guest room and let the agent know your individual needs.



TV CHANNELS

Television Channel Listing

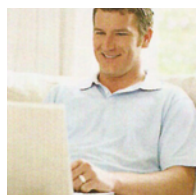
| | |
|------------------------------|--------------------------|
| 2 TV Guide | 37 Cartoon Network |
| 3 Daystar Television Network | 38 Disney |
| 4 IDPTV | 39 ABC Family |
| 5 HBO | 40 TNT |
| 6 ABC | 41 TBS |
| 7 NBC | 42 USA Networks |
| 8 CBS | 43 TV Land |
| 9 KNIN Fox 9 | 44 Animal Planet |
| 10 ON | 45 The Travel Channel |
| 11 Local Programming | 46 History Channel |
| 12 Fox | 47 A&E |
| 13 The CW | 48 Lifetime |
| 14 My Network TV | 49 HGTV |
| 15 C-SPAN | 50 Food Network |
| 16 C-SPAN 2 | 51 AMC |
| 17 Local Programming | 52 Turner Classic Movies |
| 18 Local Programming | 53 FX |
| 19 HSN | 54 Comedy Central |
| 20 TV Azteca | 55 The Weather Channel |
| 21 Retro Television Network | 56 Syfy |
| 22 Northwest Cable News | 57 Spike TV |
| 23 Telemundo | 59 Reelz Channel |
| 24 ESPN | 60 Tru TV |
| 25 ESPN 2 | 61 Bravo |
| 26 ESPN Classic | 62 E! |
| 27 Root Sports | 63 CMT |
| 28 24/7 News | 64 VH 1 |
| 29 CNBC | 65 MTV |
| 30 MSNBC | 66 Shop NBC |
| 31 Fox News | 67 Local Programming |
| 32 CNN | 68 Local Programming |
| 33 HLN | 69 Local Programming |
| 34 Discovery Channel | 95 Educational Access |
| 35 TLC | 96 Local Programming |
| 36 Nickelodeon | 98 Government Access |

Vizio TV Parental Controls

On the remote press the menu button
 Go to the setup settings section of the menu
 The default password is 0 0 0 0
 Then chose which settings you wish to put into place
 Press the menu button to lock or unlock each desired setting
 For more detailed instructions contact the front desk

Konka/Visco TV Parental Controls

On the remote press the menu button
 Go to the system setup section of the menu
 Choose the which settings you wish to put into place
 Press the OK button to select desired controls
 For more detailed instructions contact the front desk





DINING

EXPRESS START™ BREAKFAST BAR

Free Hot Breakfast Daily

Location: Hotel Great Room

Hours: 6:00 a.m. - 10:00 a.m. Seven days a week.

Whether you're ready to sit down and relax before you start your day or in a hurry, our breakfast bar offers a variety of choices. Count on getting your day off to the right start with a breakfast just the way you like it.

LOCAL RESTAURANTS

Simple Sushi Bar

1214 1st Street South
Nampa, ID 83651
208-463-4663

Honk Kong Restaurant & Lounge

117 - 12th Avenue South
Nampa, ID 83651
208-466-1244

La Bella Vie

1220 14th Ave S.
Nampa, ID 83651
208-466-0200

Darby's Bistro - Grill & Night Club

112 13th Avenue South
Nampa, ID 83651
208-461-0113

Black Bear Coffee

5687 Franklin Rd.
Nampa, ID 83687
208-468-0696

Fiesta Guadalajara

1202 Jacob Allcott Way
Nampa, ID 83686
208-467-1548

T.G.I. Fridays

16225 N. Marketplace Blvd.
Nampa, ID 83687
208-463-4003





AREA ATTRACTIONS

For more information on the following local attractions, please contact our Front Desk Staff at extension "0"

Points of Interest

Birds Of Prey National Conservation Area

384-3300

Meridian Speedway

888-2813

Eagle Island State Park

334-2154

Kuna Caves

384-3300



CHURCHES OF NAMPA



First Baptist Church

1417 3rd St S
466-3440

Grace Episcopal Church

911 4th St S
466-0782

Nampa Mennonite Church

1211 6th St N
466-9174

Church of Jesus Christ Latter-Day Saints

2122 E. Amity Rd.
461-3690

Trinity Luthern Church

8 S Midland Blvd
466-2173

First Christian Church

619 12th Avenue S
466-3566

First United Presbyterian Church

400 Lake Lowell
466-7061



SAFETY

In Case of Fire

- Plan what to do when you check in. You won't have time to plan during a fire. First, plan two exits nearest your room. If you are on an upper floor, find the nearest stairways. Be sure they are locked and unblocked, then count doors between your room and exits so you'll have a reference point if it is smoky.
- When you hear an alarm, act, don't investigate. If fire is in your room, get out and close the door. Once out report the fire.
- If fire is not in your room, leave if you can. First, feel your door. [If its cool, open it slowly and go to the nearest exit. Crawl in smoke. Fresh air will be at the floor. Take your key so you can go back if you can't use your exits.
- If your room door is hot, don't open it. Your room may be the safest place to be. Seal all cracks with wet towels. Shut off fans and air conditioners. Signal at your window. Call the fire department and wait to be rescued.



SAFETY

Your safety and the security of your personal property are of the utmost concern to those of us who welcome you as our guest. We urge you to take advantage of the following precautions.

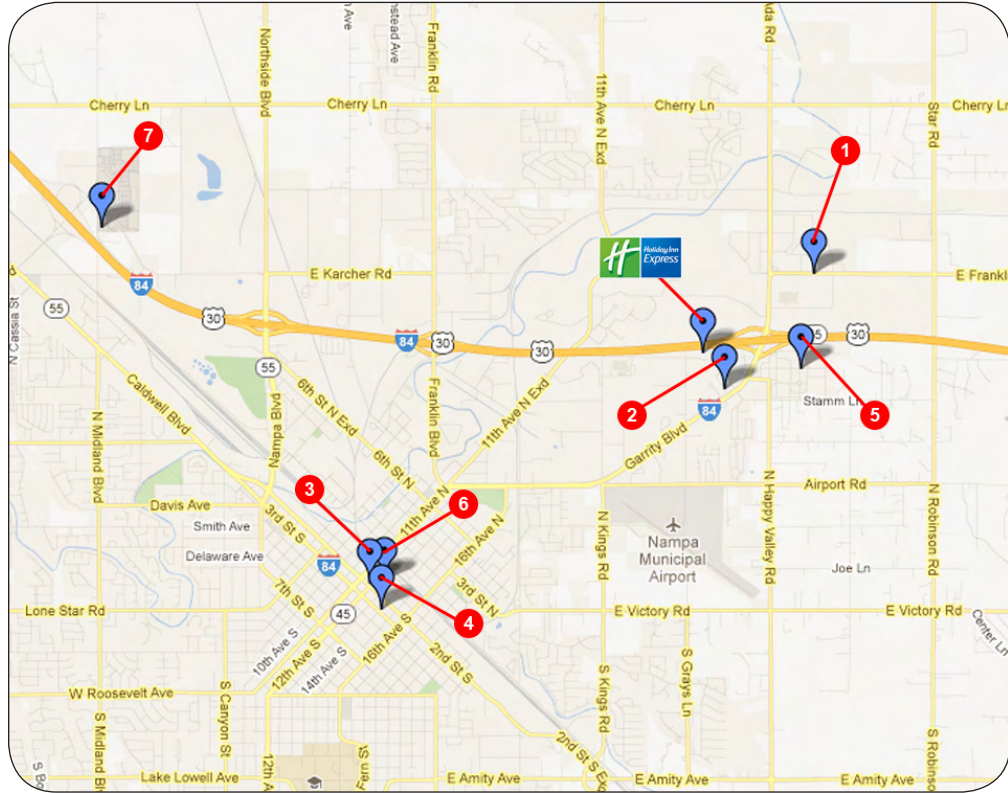
Safety And Security

Hotels today are special prey for the professional thief. Do not leave cash, credit cards, jewelry, travelers checks, negotiable securities or other valuables in your room when you are away. No hotel is burglar-proof. We cannot assume responsibility for stolen articles. Please follow these simple steps:

- Make sure you secure your valuables in a safe location.
- For extra security, line the dead-bolt provided on your door. This will prevent the door from being opened by a regular room key. As an additional measure, secure the safety latch. When leaving your room, check to see that your door is closed.
- Make sure windows are locked.
- Do not admit persons to your room without first making identification. A peep hole is provided in your door. If there is any question about the person's true identity, contact the front desk.
- Safeguard your key. Be sure to leave it with the cashier upon departure. Don't leave your key in your room or in the door. Don't give your key to others.



AREA MAP & LOCAL MERCHANTS



1. Black Bear Coffee House
5687 East Franklin Road
Nampa, ID 83687-8402
(208) 468-0696



2. Fiesta Guadalajara
1202 Jacob Allcott Way
Nampa, ID 83686
(208) 467-1548



3. Hong Kong Restaurant
117 12th Avenue South
Nampa, ID 83651-3924
(208) 466-1244



4. La Belle Vie
220 14th Avenue South
Nampa, ID 83651-4311
(208) 466-0200



5. Royal Bakery & Café
1338 North Galleria Drive
Nampa, ID 83687-5235
(208) 468-0044



6. Simple Sushi
1214 1st st. So.
Nampa, ID 83651
(208) 463-4663



7. TGI Friday's
16225 N Market Place Blvd
Nampa, ID 83687-5141
(208) 463-4003



Black Bear
Coffee House

208-468-0696
5687 E Franklin Road
Nampa, ID 83687
blackbearcoffeenampa.com




HONG KONG RESTAURANT & Lounge
Serving Treasure Valley Since 1962

Mongolian Barbeque, Chinese & American Cuisine

Beautiful & Comfortable Settings
Reservations Suggested For Parties Of 8 Or Larger
Banquet Facilities up to 80

No MSG added

*Idaho Press Tribune
Reader Choice Award
Best Oriental Cuisine
1996-2011*

HISTORIC DOWNTOWN NAMPA



See Our Coupons and Menu

VISA MasterCard DISCOVER

208-466-1244
117 12th Ave. South
NAMPA

ORDER TO GO! MON-SUN 11 AM - 9:00 PM • WE DELIVER in the Nampa Area

Hong Kong Express Same Great Food
922-4950 No Added MSG • Dine In-Take Out-Delivery
726 6 Avalon Plaza • KUNA 11:30 AM-9:30 PM DAILY • Closed Sunday



208-350-9746
220 14th Ave. South
Nampa, ID 83651
LaBelleVieNampa.com

European Cuisine

LUNCH, DINNER & BRUNCH BUFFET




Mon. - Tues. 11-3pm • Wed. - Fri. 11-9pm • Sat. 9-9pm • Sun. 9-3pm

La Belle Vie is the perfect place for your holiday gatherings, company parties, business meetings, and family dinners.



M-TH: 11-11
 F-S: 11-12
 SUN: 11-10

\$4 Drink Specials
 Signature Margarita, Signature Mojito, Cosmopolitan, Long Island Tea,
 Jack Daniel's, or Captain Morgan & Cola.
1/2 Price Apps and Taps
 All tap beers and appetizers* are half price.

10% discount with key card!
 *discount can not be combined with other discounts or coupons



GIVE AN E-GIFT CARD
GET A \$5 BONUS BITES CARD

16225 N. Marketplace Blvd, Nampa, ID 83687 • (208) 463-4003 • www.tgifridays.com

Royal Bakery
 & cafe



(208) 468-0044

10-7 Mon.-Sat. 1338 Galleria Dr.
 10-2 Tues.
 Closed on Sunday Nampa, ID 83687

Idaho's Only Sustainable Sushi



simple
 sushi bar

Simple Sushi is proud to be Idaho's first and only fully sustainable fresh sushi bar. From the delicious selection of fresh caught fish to the recycled and renewable surfaces and furnishings, Simple Sushi's comfortable and relaxed environment will make for a memorable experience every time.

208-350-9746

www.simplesushibar.com

1224 1st Street • Nampa, ID 83651



Fiesta Guadalajara



Traditional Mexican

FAMILY MEXICAN RESTAURANT

Full Bar!

S-Th: 11-10
F-Sat: 11-11



(208) 467-1548

1202 Jacob Allcot Way, Nampa, ID 83686

U.S. GUEST SERVICES

What's Around Town Visit

www.MyHotelKiosk.com

Your Local Hotel Web Directory and Online Concierge!



Contact us at:
info@myhotelkiosk.net

This Hotel Guide is a publication of

U.S. Guest Services

Publishing and Media Services For the American Hotel Industry

U.S. Guest Services
PO Box 1572 • Clayton, North Carolina 27528

Email: info@usguestservices.net Web: www.USGuestServices.net

No portion of this hotel guide may be reproduced without the written consent of U.S. Guest Services.